

Zim 7.11

The Best Entity-Relationship Platform.

Develop Once, Deploy Everywhere.

Zim is a powerful industry-proven database and development language for both Windows® and UNIX environments. For over 20 years, customers have taken advantage of this robust environment to create customized data-centric applications that are integral to their core

UPDATES AND NEW FEATURES:

Full connection to Zim 8.2 Server

Daylight Savings Time

Active X Asynchronous Events

New Zim Synchronization Utility (Windows only)

Improvements to Zim DC and Zim Executables

Operating System

Windows Vista (32 & 64 Bit)

Windows XP

Windows 98

Windows NT 4.0 (sp6)

Windows 2000

Contact ZIM Today

For further details about Zim 7.11, contact 1-613-727-1397 or sales@zim.biz.

For more information on ZIM Corporation and our entire product suite, please visit www.zim.biz.

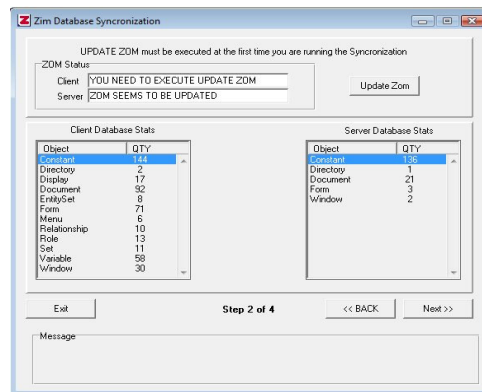
ZIM, Zim7.11, Zim IDE and the ZIM logo are trademarks or registered trademarks of ZIM Corporation. Windows and IntelliSense are registered trademarks of Microsoft Corporation in the United States and other countries. UNIX is a registered trademark of The Open Group.

New 7.11 Features

Zim 7.11 for Windows and Linux offers all the benefits of the previous version of 7.11 with the following new additions:

Full connection to Zim 8.2 Server

No migration required – simply install the latest version of 7.11 for seamless integration. Applications running on Zim 7.11 are able to access data in Zim 8.2 Server with all the benefits that Zim 8.2 offers including (Centralized Server, Database Monitoring, Improved Locking mechanism, Optimized memory management, Windows Services and others)



Daylight Savings Time

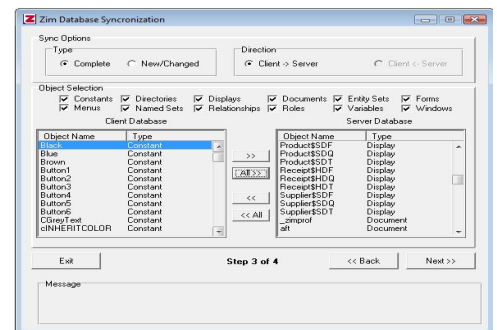
7.11 now supports the time and date for the new global Daylight Savings time standards.

Active X Asynchronous Events

ZIM 7.11 implements the recognition of asynchronous events produced by various Active X components.

New Zim Synchronization Utility (Windows only)

A new tool that allows rapid synchronization of Zim object definitions from a Zim 7.11 database to a Zim 8.2 database. This means that while the Zim 7.11 applications are in use they can be maintained seamlessly with an 8.2 database.



General Improvements to Zim DC and Zim Executables

Improved Remote Access of Databases-Running with Zim integrated server or any other SQL server (Oracle, DB2, SQL Server, PostGres, My SQL etc...)

